



**AeroText™ for Android™
Bluetooth® Texting
Quick Reference Guide for
Empower™ Software ver. 1.12**

PRC Tech Support: (800) 262-1990

service@prentrom.com

www.prentrom.com

STEP 1: DOWNLOAD AND INSTALL THE AEROTEXT APP ONTO YOUR ANDROID PHONE

Texting requires an Android phone with the PRC-Salttillo AeroText app installed. To install the app, type the following address into the browser on your phone or point your phone's camera at the QR code below.

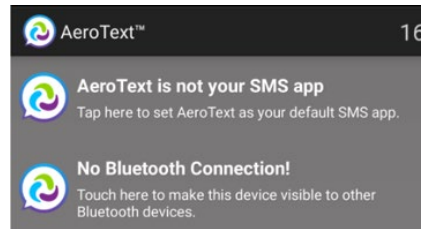
<https://prc-salttillo.com/texting/>



Important! It is critical that you scroll down and read all of the directions for installing the app on your phone before checking the End User License Agreement box.


Follow the prompts to install the app on your phone.

Be sure to set the AeroText app as your default messaging app and make sure Bluetooth is enabled and your phone is discoverable. If you have not done so, you will see the following at the top of the AeroText app.



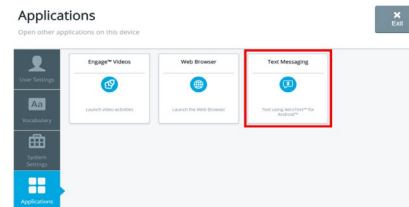
Note: Authentication is not required to pair.

STEP 2: PAIR YOUR PHONE TO YOUR ACCENT® DEVICE WITH EMPOWER

1. Select **MENU**.
 2. Select **TOOLBOX**.
 3. Select **SYSTEM SETTINGS**.
 4. Select **DEVICES & CONNECTIONS**.
 5. Select **BLUETOOTH PHONE**.
 6. Select **PAIR DEVICE**.
 7. Once your phone appears in the list, select **PAIR**.
 8. Select **CLOSE** and exit out of the toolbox.
9. You will see a Phone icon  in the multi-bar of your vocabulary to indicate that your device is connected.

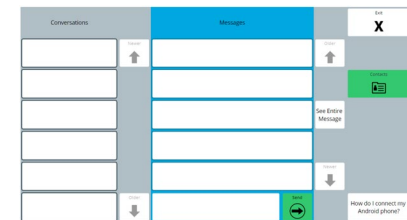
STEP 3: TEXT FROM EMPOWER

1. Select **MENU**.
2. Select **TOOLBOX**.
3. Select **APPLICATIONS**.
4. Select **TEXT MESSAGING**.



CONVERSATIONS AND MESSAGES


1. Your existing Conversations will appear in the left-hand column. Messages within a conversation will appear to the right.
2. **Select a conversation** to read and respond to messages in that conversation. *Give the messages time to populate. If a conversation has thousands of messages, you will need to wait longer.*
3. To respond to a message, select the **ENTER TEXT** button and then compose your message. Select **FINISHED** when your message is complete.
4. Select **SEND**.
5. If you cannot read an entire message from the home screen view, select **SEE ENTIRE MESSAGE**. Then select the message you would like to view. This function will stay on until you select **SEE ENTIRE MESSAGE** again.



SEND A MESSAGE TO AN EXISTING CONTACT

1. Select **CONTACTS**.
2. **Search and find the contact** you want to send a message to.
3. Select the green **NEW CONVERSATION** button.
4. **Select your desired contact**.
5. **Compose your message** and then select **FINISHED**.
6. Select **SEND**.

RECEIVING NEW MESSAGES

You will see the following icon  in the multi-bar of your vocabulary when you receive a new message. In addition, the Conversation will be in **bold**.

